



**KATHMANDU MODEL  
SECONDARY SCHOOL**

BAGBAZAR, KATHMANDU

# MANAGEMENT & LAW PROSPECTUS

2026/2027





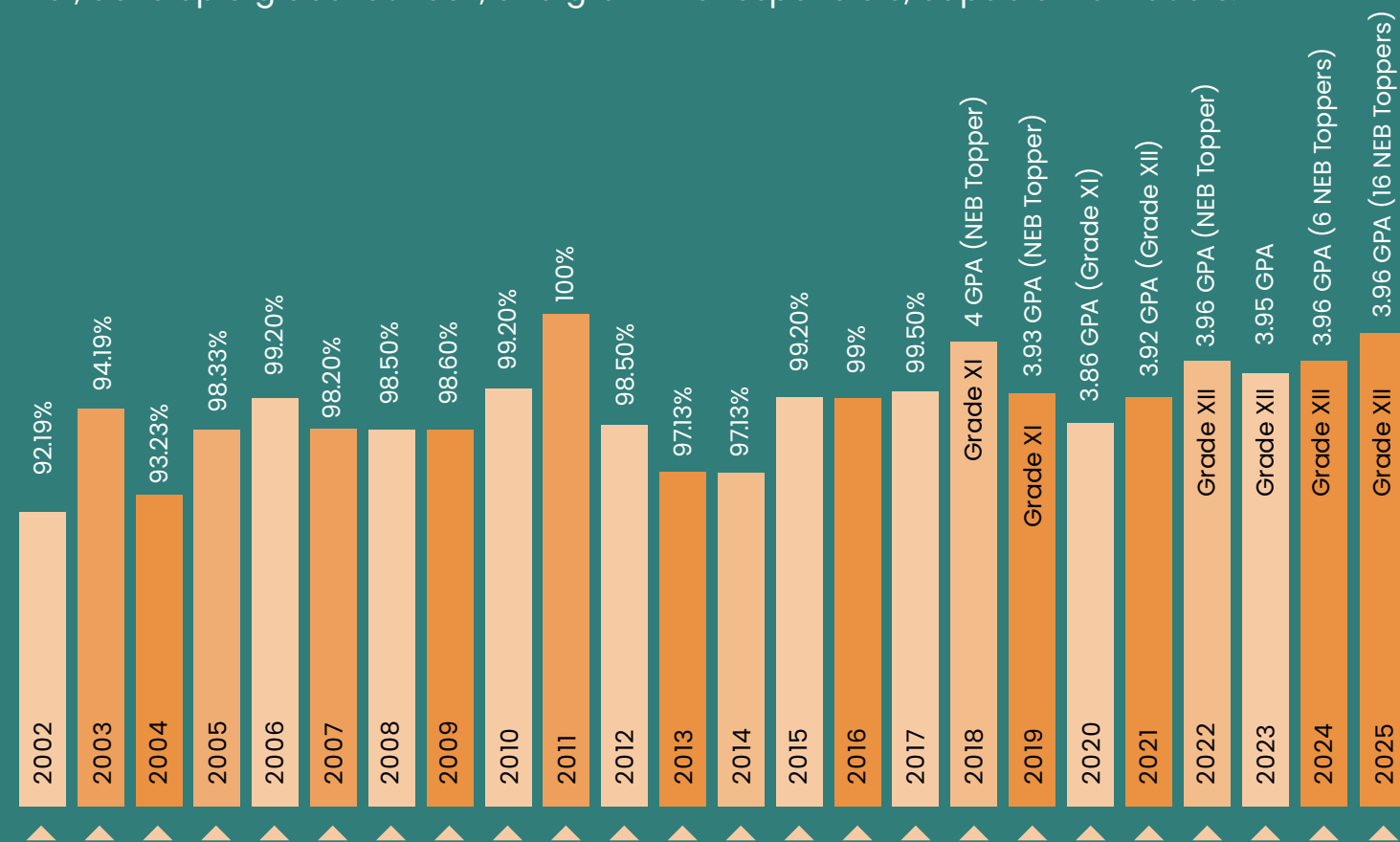
# What's Inside

Introduction	04
KMC Values, Goals & Core Values	06
Message From the Executive Chairman	08
Message From the Principal	09
Accomplishments	10
Infrastructure	13
Management Program	14
Admission Procedure	15
Law Program	16
Admission Procedure	17
Scholarship Schemes for Management & Law	18
Celebrating Excellence	20
Academic Achievements	22
Highest Number of Scholarship Holder	28
Tech-Driven Education	29
Facilities	30
ECAs & CCAs at KMC	34
KMC Students' Committee	35
Counseling and Motivation	38
Psycho-Social Empowerment	38
Career Counseling & International University Guidance	39
Beyond Neb Curriculum	40
Research and Presentation	42
Course-Based Subject Group PPT Competition	44
Industrial Visit & Field Visit	45
Corporate Reach Out Club	46
Event Management Club	47
Legal Club	48
Moot Court / Client Counseling	49
KMC Silver Jubilee Celebration	50
Principal's List Award: Celebrating Academic Excellence	51
International Collaboration	52
Class Representatives (CR) Leadership & Personality Development Workshop	54
KMC Educational Network	55

# INTRODUCTION

Located in Bagbazar, Kathmandu, Kathmandu Model Secondary School (KMC) is a leading +2 institution in Nepal, established in 2000. With over two decades of excellence, KMC is known for its strong academic performance, modern facilities, and student-centered learning approach. KMC is an ISO-certified institution and has been honored with the Best +2 Educational Award by the Ministry of Education, Science & Technology.

KMC focuses on holistic development by nurturing discipline, values, and critical thinking in a technology friendly environment. With experienced faculty, well-equipped labs, and consistently outstanding NEB results, the college prepares students for future academic and professional success. Committed to innovation and quality education, KMC empowers students to realize their potential, develop a global outlook, and grow into responsible, capable individuals.



25 Years of Academic Excellence Past NEB Results of KMC



# KMC VALUES & GOALS



## PHILOSOPHY

At KMC, we believe that education should prioritize not only academic excellence, but also each student's overall growth. We aspire to create a supportive environment in which students can pursue their passions and interests, learn valuable life skills, and become responsible global citizens.



## MISSION

Our mission is to empower students to achieve their full potential by providing a world-class education that is academically rigorous, intellectually stimulating, and personally enriching. We aim to foster a love of learning, a spirit of inquiry, and a commitment to lifelong growth and development.



## VISION

Our vision is to be a leading educational institution in Nepal that is recognized for its academic excellence, innovative teaching methodologies, and commitment to student success. We aspire to create a community of lifelong learners who are compassionate, curious, and committed to making a positive impact in the world.

## CORE VALUES

### Academic Excellence:

We are committed to providing a rigorous and challenging academic curriculum that prepares our students for success in higher education and the workforce.

### Holistic Development:

We believe in nurturing the physical, emotional, and intellectual well-being of our students through a range of extracurricular activities and programs.

### Innovation:

We embrace innovation and creativity in all aspects of our work, from teaching and learning to research and development.

### Community:

We value the diversity of our community and believe that collaboration, mutual respect, and understanding are essential to achieving our goals.

### Social Responsibility:

We are committed to making a positive impact in our community and in the world by promoting social responsibility, ethical behavior, and civic engagement.

### Inclusion and Sustainability:

We focus on Inclusion which reflects our commitment to creating a welcoming and inclusive environment for all individuals, regardless of their background. We also prioritize the preservation of natural resources and reducing our environmental impact through sustainable practices in our operations, such as reducing waste and energy consumption, promoting eco-friendly products and services, and supporting community initiatives for environmental sustainability.

## Goals

- Instilling resilience to help students cope with life's inevitable obstacles.
- Imparting sound professional training and knowledge to students and inculcating in them time-tested values and responsibilities as good citizens of the country.
- Fostering all-round development of students through curricular and extra-curricular programs.
- Motivating students to strive for and attain academic and professional excellence.
- Encouraging students to become self-reliant and promoting harmonious relations through unity and interaction among multicultural, multireligious, multilingual, and multiethnic groups.

# Message from the Executive Chairman



## Dear Students and Well-Wishers,

For over 26 years, Kathmandu Model College (KMC) has stood as a center of academic excellence where young minds are inspired, talents are nurtured, and futures are shaped with purpose and vision. Our unwavering commitment to excellence in Science, Management, and Law education continues to guide us in delivering quality learning experiences that prepare students for the challenges of an ever-evolving world.

At KMC, we firmly believe that education goes beyond textbooks and classrooms. It is about fostering critical thinking, encouraging innovation, and developing confident individuals who are ready to lead and make meaningful contributions to society. We strive to create an environment that promotes intellectual curiosity, ethical values, and holistic growth.

Our dedicated faculty, modern teaching methodologies, and student-centered approach ensure that every learner receives the guidance and opportunities they need to excel. We take pride in shaping not just academically competent graduates, but responsible citizens and future leaders who can bring positive change to the world.

I warmly invite you to become a part of our vibrant academic community

**Rameshwor Aryal**

# Message from the Principal

## Dear Esteemed Parents and Guardians,

Thank you for trusting us with your child's education. At KMC, we consider it a privilege to nurture young minds and empower them through quality education. Guided by our motto, "Academic Excellence through Quality Education," we strive to develop critical thinkers, creative learners, and proactive individuals ready for a rapidly evolving world.

We offer a strong academic foundation complemented by diverse co-curricular and extracurricular opportunities, along with focused preparation for competitive entrance examinations. As a result, many of our students secure admissions in MBBS, Engineering, Law, CA, BBA, and a wide range of other professional and academic programs at leading national and international universities.

At KMC, you will find a warm, supportive environment that encourages students to discover their potential and pursue their ambitions. We invite you to visit us and experience what sets KMC apart, and to partner with us in shaping your child's future.

**Nagendra Bdr. Aryal, PhD**





# Accomplishments

Kathmandu Model Secondary School (KMC) has a remarkable history of achievements and accomplishments that have established it as a distinguished institution in Nepal. With a strong commitment to discipline and academic excellence, KMC has consistently maintained high standards for over twenty-five years, setting itself apart from other educational institutions.

- KMC is proud to have received the **Educational Award 2024** by the **Ministry of Education** for our outstanding results.
- For the past **twenty-six years**, we have upheld discipline and academic standards, making us a standout institution with results of up to **100%**.
- Our students consistently reach new heights, from being **NEB Toppers to CEE MBBS Entrance Toppers**.
- KMC has become the **No. One +2 institution in Nepal** with highest number of students securing scholarships for **Medical and Engineering**.
- Our students easily get accepted into **prestigious universities** in Nepal and abroad.
- Our visionary plan is to be converted into a university, and we offer classes from **Playgroup to Master's Degree**.
- KMC is proud to have received the **Best +2 School/College in Nepal** by the **Fair International Educational Award 2025**
- KMC has been honored with the NEB Excellence Award for **eight consecutive years**.
- KMC +2 Bagbazar set a new benchmark last year through outstanding academic excellence, producing **16 NEB toppers** with an exceptional **3.96 GPA**, along with **21 future Legal Professionals** and **16 Chartered Accountants**.





## Infra Structure

KMC takes immense pride in its modern infrastructure, featuring well-designed buildings with spacious classrooms equipped with advanced audio-visual technology. Well-equipped laboratories and updated computer labs provide practical, hands-on learning, while the library offers extensive resources and a peaceful study environment.

Specialized academic spaces, along with collaborative areas and student lounges, create an engaging and interactive campus life, supporting KMC's commitment to quality education and overall student development.



Computer Lab



Advanced Classroom



Auditorium Hall



Seminar Hall



Swimming Pool



Cafeteria

# Management Program

The +2 program in management is equally sound in terms of its physical resources, human resources and academic results. This program facilitated by highly professional teachers, encourages plenty of extra curricular activities with regular evaluation system and a high degree of discipline.

## Grade XI & XII

### Compulsory Subjects

#### Nepali

This subject helps students develop their communication skills in the national language, fostering a deeper connection to their cultural heritage and improving their linguistic proficiency.

#### English

Proficiency in English is essential for global communication and academic success. This subject focuses on enhancing students' reading, writing, speaking, and comprehension skills.

#### Accountancy

Accountancy introduces students to financial principles, bookkeeping, and accounting standards. Through theoretical lessons and practical applications, students develop skills in analysis and financial decision-making—essential for careers in business and finance.

#### Economics

Economics helps students understand how resources are allocated at individual, business, and national levels. Covering both micro and macro aspects, the course emphasizes critical thinking and real-world application of economic principles.

**Note: Theory/Practical 75 Marks  
Theory & 25 Marks Practical**

#### Optional I

(Any One) Basic Mathematics/Social Studies and Life Skill Education

#### Optional II

(Any One) Business Studies/Business Mathematics/Computer Science/Hotel Management

# Admission Procedure

## Eligibility Criteria for Management

Students securing at least **2.0 GPA in SEE** or in an equivalent recognized board will be eligible for management stream.

- Admission in management is based on its entrance exam. Students must meet the criteria set by the school. Entrance questions include **Maths 15 marks + English 45 marks + GK 15 marks.**
- Students can fill the online form from school's website [www.ktmmodelcollege.edu.np](http://www.ktmmodelcollege.edu.np).
- Entrance center, Entrance symbol number, model question and fee structure will be sent to your registered email ID.
- School will publish entrance result via email or SMS. Interested students must get admission within admission deadline or quota fulfillment whichever is earlier.
- Only meritorious students will be enlisted for admission

**Morning Session: 6:20 AM – 11:20 AM Day Session: 11:40 PM – 4:40 PM**

These flexible timings allow students to choose a schedule that best fits their personal and academic commitments, ensuring they can balance their studies with other activities and responsibilities. HM and CS: 50 Marks Theory & 50 Marks Practical.



# Law Program

KMSS offers +2 courses in the Faculty of Law and lays foundation to find your career goal in legal sector. The program is facilitated by highly tested teaching professional.

## GRADE: XI

### Subjects

- English,
- Nepali,
- Social Studies & Life Skill Education,
- Jurisprudence,
- Procedural Law,
- Constitutional Law

Time Morning: 6:20 AM – 11:20 AM

## GRADE: XII

### Subjects

- English,
- Nepali,
- Social Studies & Life Skill Education,
- Nepalese Legal System,
- Legal Drafting,
- Civil and Criminal Law

Note: Theory/Practical All Subject: 75 Marks Theory & 25 Marks Practical

# Admission Procedure

## Eligibility Criteria for Law

- Students securing at least 1.6 GPA in SEE or in an equivalent recognized board will be eligible for law stream.
- Admission in law is based on its entrance exam. Students must meet the criteria set by the school. Entrance questions include Maths 15 marks + English 45 marks + GK 15 marks.
- Students can fill the online form from school's website [www.ktmmodelcollege.edu.np](http://www.ktmmodelcollege.edu.np).
- Entrance center, Entrance symbol number, model question and fee structure will be sent to your registered email ID.
- School will publish entrance result via email or SMS. Interested students must get admission within admission deadline or quota fulfillment whichever is earlier.
- Only meritorious students will be enlisted for admission



# Scholarship Schemes for Management & Law

## Metropolitan Scholarship

- **Metropolitan scholarship** will be granted to the listed students from Kathmandu Metropolitan City.

## Special Scholarship Schemes

- The limited number of scholarships will be awarded on a merit basis, and the student must pass each terminal exam to continue the scholarship.
- **Sushil Memorial Scholarship** which is established on the memory of Late Sushil Sahani will be provided to top three students of the KMC first entrance examination.
- 20 Basic Scholarship Schemes Those who are enlisted in scholarship criteria must get admission before completion of scholarship quota as scholarship is available on first come first admission basis.

## Special Awards

- **KMC Excellence Award** of Rs. 15,001/- along with a trophy will be awarded to students for their overall excellent performance in all activities, including academic excellence.
- **Bishnu-Radha Award** of Rs. 10,001/- cash along with a trophy, established by Mr. Bishnu Prasad Sharma, Founder Chairman of KMC, will be awarded to any two KMC faculty toppers in the NEB Exam of Class XI.
- **Aama Dil Kumari Award** of Rs. 5,001/- cash along with a trophy, established by Mr. Lank Bahadur K.C., Founder, will be awarded to two female students of KMC who score the highest marks in the NEB Exam of XI.

## Basic Scholarship Schemes

Those who are enlisted in scholarship criteria must get admission before completion of scholarship quota as scholarship is available on first come first admission basis. Scholarship for Management & Law in Grade XI during admission is awarded on the basis of Cumulative marks [SEE (25%) + KMC Entrance (75%)].

GPA 3.96-4.0	=	25 marks
GPA 3.90-3.95	=	24 marks
GPA 3.85-3.89	=	23 marks
GPA 3.80-3.84	=	22 marks
GPA 3.75-3.79	=	21 marks
GPA 3.70-3.74	=	20 marks
GPA 3.61-3.69	=	19 marks
GPA 3.21-3.60	=	18 marks
GPA 2.85-3.20	=	16 marks
GPA 2.50-2.84	=	14 marks
GPA 2.0 & 2.49	=	12 marks

Scholarship schemes are being provided for students who have excelled in regional, national, and international games and sports. Additionally, scholarship schemes are also available for students who have demonstrated noteworthy and remarkable achievements in extracurricular activities (ECA) and co-curricular activities (CCA).

Notes: The scholarship quota during admission is limited, so it will be provided on a first-come, first-serve basis. The above schemes on tuition fees during admission are allocated only for three months (up to the First Term Exam). The scholarship will be adjusted according to the result of the terminal examination as mentioned above

## Scholarship Schemes in Grade XI Management & Law

S.n.	Cumulative Marks	Annual Fee	Tuition Fee	Number Of Scholar
1	85 and above	75%	100%	20
2	80-84	75%	75%	20
3	75-79	50%	50%	20
4	70-74	50%	25%	20
5	65-69	25%	25%	20
6	60-64	25%	-	20

## Scholarship According to Terminal Examinations of Class XI & XII

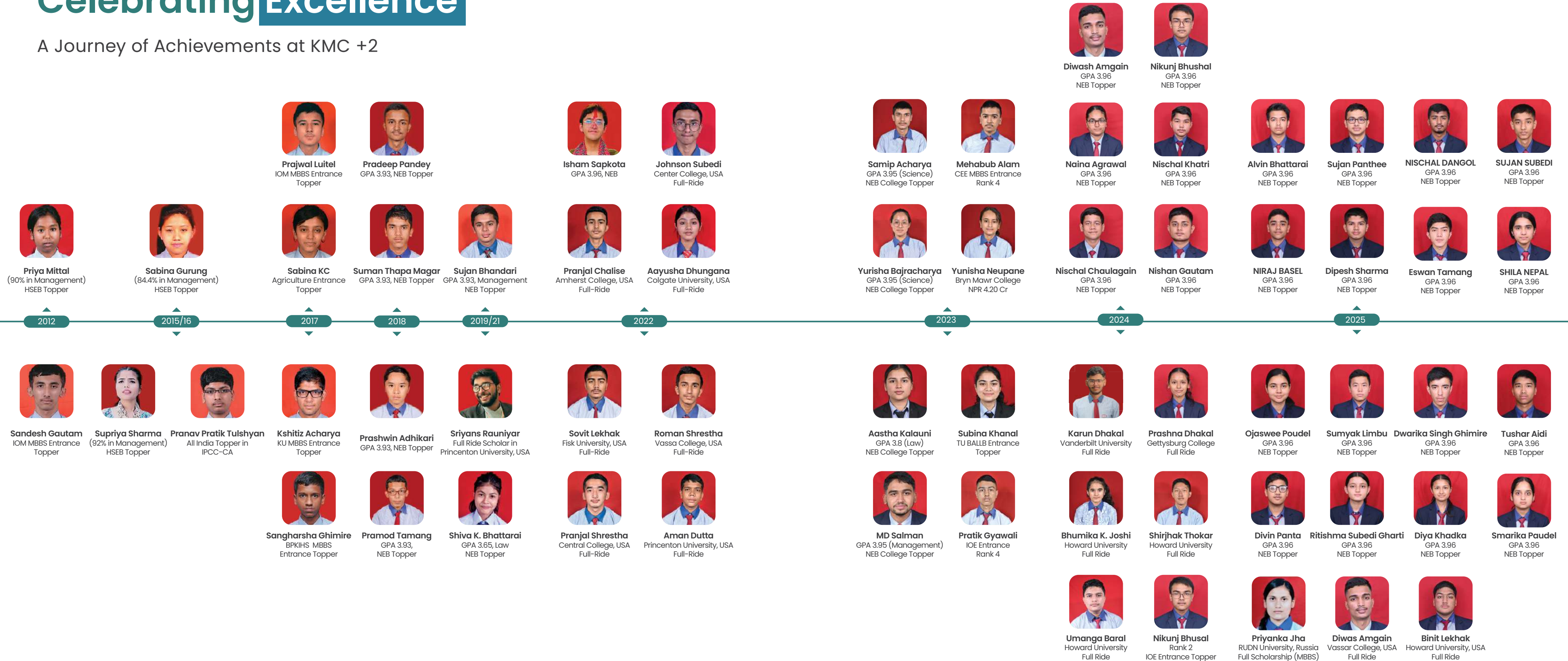
S.n.	MARKS IN SCHOLARSHIP	NO. OF DURATION	TERMINAL EXAM SCHARLORS	Durations
1	Topper or 85% & above	100% on Tuition Fee	ALL	3 months
2	80% and above	50% on Tuition Fee	ALL	3 months
3	75% and above	25% on Tuition Fee	ALL	3 months
4	70% and above	10% on Tuition Fee	ALL	3 months

## Scholarship for Class XII According to the Class XI Final Result

S.n.	MARKS IN SCHOLARSHIP	NO. OF DURATION	TERMINAL EXAM SCHARLORS	Number Of Scholar
1	Topper or 85% & above	100% on Tuition Fee	ALL	3 months
2	80% and above	50% on Tuition Fee	ALL	3 months
3	75% and above	25% on Tuition Fee	ALL	3 months
4	70% and above	10% on Tuition Fee	ALL	3 months

# Celebrating Excellence

A Journey of Achievements at KMC +2



# Academic Achievements 2082

16 Students Secured  
**3.96 GPA**

13 Students Secured  
**3.95 GPA**

11 Students Secured  
**3.94 GPA**

99 Students Secured  
**3.90+ GPA**

668 Students Secured  
**A+ GRADES**

1051 Students Secured  
**A GRADES**

## KMCian (24<sup>th</sup> Batch) for Excellent Results in the NEB Grade 12 Examination – 2082!

3.96 GPA



**Sujan Subedi**  
GPA 3.96  
NEB Topper



**Shila Nepal**  
GPA 3.96  
NEB Topper



**Nischal Dangol**  
GPA 3.96  
NEB Topper



**Ojaswee Poudel**  
GPA 3.96  
NEB Topper



**Sumyak Limbu**  
GPA 3.96  
NEB Topper



**Dwarika Singh Ghimire**  
GPA 3.96  
NEB Topper



**Alvin Bhattarai**  
GPA 3.96  
NEB Topper



**Eswan Tamang**  
GPA 3.96  
NEB Topper



**Divin Panta**  
GPA 3.96  
NEB Topper



**Ritishma Subedi Gharti**  
GPA 3.96  
NEB Topper



**Diya Khadka**  
GPA 3.96  
NEB Topper



**Niraj Basel**  
GPA 3.96  
NEB Topper



**Dipesh Sharma**  
GPA 3.96  
NEB Topper



**Tushar Aidi**  
GPA 3.96  
NEB Topper



**Sujan Panthee**  
GPA 3.96  
NEB Topper



**Smarika Paudel**  
GPA 3.96  
NEB Topper

## KMCian (24<sup>th</sup> Batch) For Excellent Results In The NEB Grade 12 Examination – 2082!

3.95 GPA



**Yasaswee Parajuli**  
GPA 3.95  
NEB Topper



**Suveksha Dahal**  
GPA 3.95  
NEB Topper



**Kishor Bhatta**  
GPA 3.95  
NEB Topper



**Sushant Lamichhane**  
GPA 3.95  
NEB Topper



**Bipika Adhikari**  
GPA 3.95  
NEB Topper



**Satkar Puri**  
GPA 3.95  
NEB Topper



**Sushab Shrestha**  
GPA 3.95  
NEB Topper



**Bijan Dawadi**  
GPA 3.95  
NEB Topper



**Aseem Subedi**  
GPA 3.95  
NEB Topper



**Kaushal Pandey**  
GPA 3.95  
NEB Topper



**Sulav Neupane**  
GPA 3.95  
NEB Topper



**Tilak Neupane**  
GPA 3.95  
NEB Topper



**Sujan Pant**  
GPA 3.95  
NEB Topper

3.94 GPA



**Shuveksha Bista**  
GPA 3.94  
NEB Topper



**Indra Bahadur Budha**  
GPA 3.94  
NEB Topper



**Aabhaya Chakradhar**  
GPA 3.94  
NEB Topper



**Aarush Thapaliya**  
GPA 3.94  
NEB Topper



**Pooja Acharya**  
GPA 3.94  
NEB Topper



**Roshan Khadka**  
GPA 3.94  
NEB Topper



**Aayusha Acharya**  
GPA 3.94  
NEB Topper



**Devendra Bashyal**  
GPA 3.94  
NEB Topper



**Aadesh Chhetri**  
GPA 3.94  
NEB Topper



**Aaditya Kumar Kanu**  
GPA 3.94  
NEB Topper



**Aasharaya Dhamala**  
GPA 3.94  
NEB Topper

# Academic Achievements

Kathmandu Model Secondary School (KMC) takes pride in its comprehensive approach to enhancing students' learning experiences by emphasizing practical, student-centered teaching methods that are modern, resourceful, innovative, and enterprising. We are dedicated to building a strong foundation in management education at the +2 level, preparing students to become highly qualified human resources for the 21st-century global market.

**16** Future Managers & Chartered Accountants (CAs)  
from KMC in the Year (2082)



Aaditya Kanu  
CA



Aanchal Mahato  
CA



Aarju Khatiwada  
CA



Aayushma Tiwari  
CA



Abhipsa Khatri  
CA



Karun Dhakal  
CA



Mehilal Yadav  
CA



Nistha Bajracharya  
CA

## Future Managers & Chartered Accountants (CAs)

from KMC in the Year (2082)



Prashna B.k.  
CA



Priyanka Sah  
CA



Rajnikant Yadav  
CA



Rijan Gurung  
CA



Subham Agrawal  
CA



Swastika Maharjan  
CA



Swikrit Thapa  
CA



Vidya Rauniyar  
CA

# Academic Achievements

**21** Future Legal Professionals from KMC in the  
Year (2082)

Selected in Prestigious Universities /College & Nepal Law Campus  
Our law program serves as a breeding ground for talented legal professionals. Law students excel academically and receive scholarships, recognizing their dedication to the field and enabling them to contribute meaningfully to the legal profession.



**Kripa Maharjan**  
BALLB



**Utsav Neupane**  
BALLB



**Arika Thapa**  
BALLB



**Punam Khadgi**  
BALLB



**Suman Yadav**  
BALLB



**Saral Koirala**  
BALLB



**Bhumika Ghimire**  
BALLB



**Sarbashree Kc**  
BALLB



**Sahil Sah**  
BALLB



**Anjali Rawat**  
BALLB



**Saloni Kumari Sah**  
BALLB



**Sumi Yadav**  
BALLB



**Mithlesh Kuma Mahato**



**Saloni Kumari Shah**  
BALLB



**Prashiddhi Kandel**  
BALLB



**Ojaswi Baral Tu**  
BALLB



**Neha Baraili**  
BALLB



**Ranjana Kumari Yadav**  
BALLB



**Aayushma Chhetri**  
BALLB



**Subekshya Tamang**  
BALLB



**Anshu Priya Yadav**  
BALLB

# From KMC to International Universities (Year 2025/26)



Priyanka Jha  
RUDN University, Russia  
Full Scholarship (MBBS)



Binit Lekhak  
Howard University, USA  
Full Ride  
Total Scholarship:  
NPR 9.03 Cr



Diwash Amgain  
Vassar College, USA  
Full Ride  
Total Scholarship:  
NPR 14.96 Cr

## From KMC in US Universities (Year 2024/25)



Karun Dhakal  
Vanderbilt University  
Total Scholarship:  
NPR 5.12 Cr



Prashna Dhakal  
Gettysburg College  
Total Scholarship:  
NPR 3.93 Cr



Bhumika K. Joshi  
Howard University  
Total Scholarship:  
NPR 3.52Cr



Shirjhak Thokar  
Howard University  
Total Scholarship:  
NPR 3.52 Cr



Umanga Baral  
Howard University  
Total Scholarship:  
NPR 3.52 Cr



Rohan Purbey  
University of Bebraska Lincoln  
Total Scholarship:  
NPR 3.3 Cr



Upasana Aryal  
Knox College  
Total Scholarship:  
NPR 3.2 Cr



Shreyup Bhandari  
Central College  
Total Scholarship:  
NPR 3.09 Cr



Urmila Thapa  
Caldwell University  
Total Scholarship:  
NPR 19 Cr



Abhishek Phyuhal  
University of Texas at Arlington  
Total Scholarship:  
NPR 15 Cr



Sagun Pandey  
Rowan University  
Total Scholarship:  
NPR 13 Cr



Dipak Kumar Sah  
Texas State University  
Total Scholarship:  
NPR 121 Cr



Deekshanta Paudel  
University of Southern Mississippi  
Total Scholarship:  
NPR 12 Cr



Krishna Sah  
Youngstan State University  
Total Scholarship:  
NPR7752 Lakhs



Pranisha Rijal  
University of Southern Mississippi  
Total Scholarship:  
NPR 672 Lakhs



Abhinav Shrestha  
Texas State University  
Total Scholarship:  
NPR 65 Lakhs



Nishchit Bhandari  
Dakota State University  
Total Scholarship:  
NPR 60 Lakhs



Shreyak Silwal  
University of Texas at Arlington  
Total Scholarship:  
NPR 55 lakhs



Shasank Neupane  
Dakota State University  
Total Scholarship:  
NPR 46.24 Lakhs

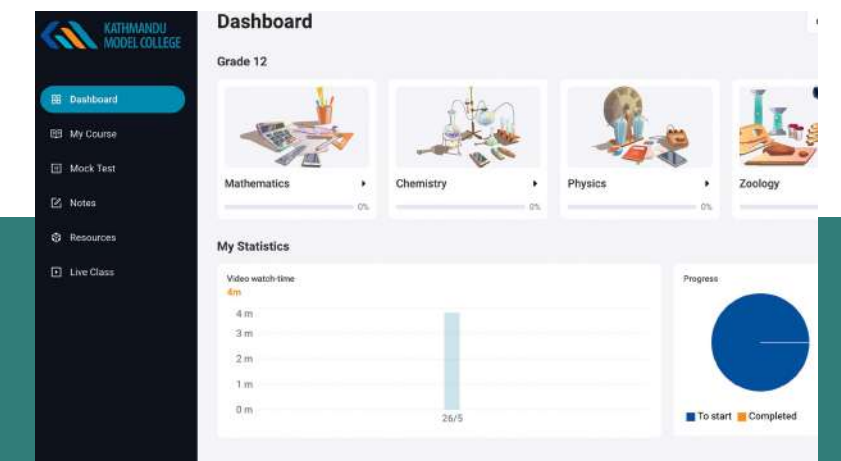
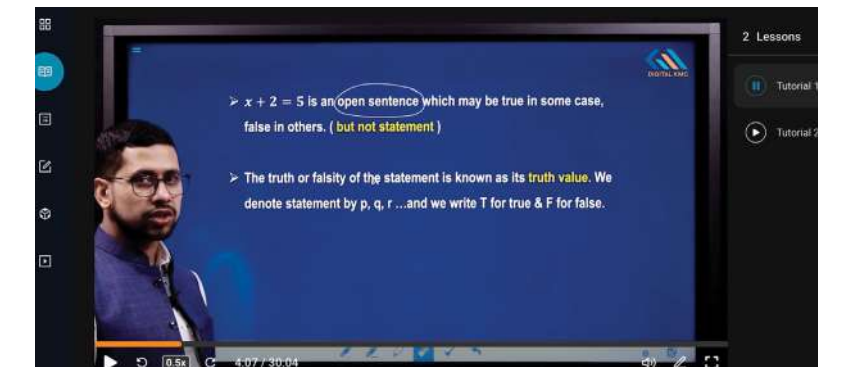


Rishab Jha  
Texas State University  
Total Scholarship:  
NPR 32.64 Lakhs

# Tech-Driven Education, Powered by Digital KMC

Digital KMC enhances education through technology by offering flexible, student-centered learning and efficient academic tracking. Students benefit from dedicated doubt-clearing sessions, as well as evening and holiday virtual classes for continuous support beyond school hours. Pre-recorded lessons

allow them to revisit topics anytime at their own pace. Alongside this, digital systems manage everything from attendance to exam reports and generate comprehensive overall student reports, ensuring transparency and helping teachers and parents effectively support each learner's progress.



# Facilities



## Library

Our library provides books, journals, an e-library, and entrance preparation materials.

## Hostels

KMC offers a safe and comfortable hostel with clean rooms, separate facilities for boys and girls, hygienic food, and support for study and recreation.



## Cafeteria

Our cafeteria serves nutritious, affordable meals with a varied weekly menu.



## Sports & Co-Curricular:

KMC offers sports and extracurricular activities to develop students' talents and break monotony.



## Laboratories:

Our computer labs are meticulously organized and equipped with state-of-the-art computers, the latest software, and technologies, along with unlimited internet access. This setup provides students with practical, hands-on experience to enhance their understanding.

## Healthcare:

KMC provides medical care with a nurse, first aid, sick rooms, and health camps.

## Transportation Facility:

KMC provides transportation facilities for needy students in different routes in Kathmandu and Bhaktapur during the morning and day shift.



## Day Boarders:

KMC provides day boarder facilities to needy students who want to take advantage of extra classes, from 7 AM to 5:30 PM. At KMC, we believe in providing an all-round development opportunity to our students. Our facilities cater to various aspects of students' lives, including academics, physical well-being, emotional well-being, and overall development.

## Seminar & Auditorium Hall

KMC has well-equipped seminar halls and an auditorium for workshops, presentations, training, and interactive programs.



## Safety and Security

- Comprehensive CCTV surveillance across campus
- Well-structured school preparedness for emergencies
- Earthquake-resistant building with trained staff
- Strict fire safety measures and protocols



## Techno-Friendly Classes:

KMC uses modern digital tools like presentations, projections, and videos for teaching.



## Roof-Top Swimming Pool

KMC provides a well-maintained swimming pool for students. It supports physical fitness and recreation. Students can enjoy safe swimming activities under proper supervision.





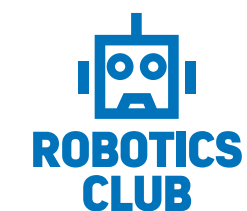
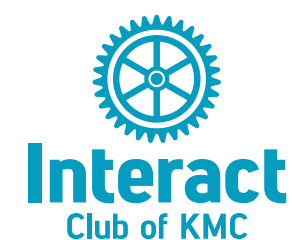
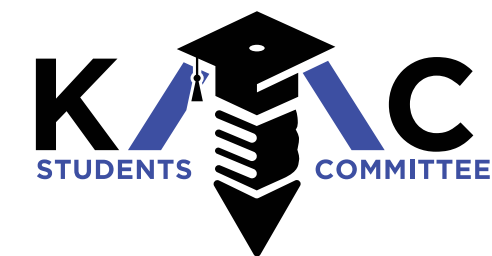
## ECAs , CCAs & Sports



KMC offers a vibrant ECA, CCA, and sports program led by an executive committee and 18 different student clubs. These activities include sports, cultural programs, leadership training, and creative engagements that help students explore their interests beyond academics. The main goal is to develop leadership, teamwork, discipline, and creativity among students. Through these platforms, KMC also promotes values such as responsibility, collaboration, and holistic personal growth.

## KMC Students' Committee (KMCSC)

KMC also has a dynamic Student Committee that represents students' voices and supports the smooth execution of academic and co-curricular activities. It works closely with the administration and executive committee, along with 18 different clubs, to organize programs, manage events, and promote student engagement. The committee helps develop leadership, responsibility, and teamwork among students. It also plays an important role in maintaining discipline and fostering a positive, inclusive, and active learning environment at KMC.





## Counselling & Motivation

At KMC, counseling services support students' academic, social, emotional, and career development. The program includes individual and group counseling, mental health support, and guidance activities to promote self-awareness, decision-making, and problem-solving skills. It also assists students in academic and career planning and future transitions. Overall, KMC's counseling program aims to ensure holistic student growth and well-being.



## Psycho-Social Empowerment

The Psycho-Social Department at KMC supports students' mental and emotional well-being through counseling, assessment, and crisis support services. It promotes mental health awareness, confidentiality, and respect while ensuring accessible care for all students. The department also focuses on building social support, providing referrals, and encouraging overall psychological well-being.



## Career Counseling & International University Guidance

Every year, students are selected for full-ride scholarships at prestigious universities around the world. The college also supports students through an international placement cell with dedicated guidance counselors and team, providing letters of recommendation and personalized assistance throughout the entire application process. In addition, KMC has established partnerships with various universities, further expanding global opportunities for its students.



# Beyond NEB Curriculum

## Pre-BBA & Pre-CA Classes

We run Pre-CA and Pre-BBA classes alongside the regular NEB curriculum from Grade XI designed specifically for students aiming for careers in commerce and management. These early interventions build strong foundational skills and exam readiness, helping our students stay ahead of the competition. This strategic approach is a major reason behind our remarkable track record in CA foundation and BBA entrance exams nationwide.



## 'NCC Education, UK'

A UK-Based Internationally Recognized Awarding Body NCC Education is a prestigious UK-based awarding body that is internationally renowned for its commitment to excellence in education. Originally established as part of the esteemed National Computing Centre, NCC Education has been providing Computing qualifications since 1976. In 1997, NCC Education expanded its offerings to include a comprehensive Higher Education portfolio that encompasses Business qualifications, IT qualifications for school children, and a range of foundation qualifications.

## Collaboration between KMC and 'NCC Education, UK'

The collaboration between KMC and NCC Education marks an important partnership in delivering high-quality education in the field of technology and computing. NCC Education, a UK-based internationally awarding body, has a rich history and expertise in providing comprehensive qualifications.

With centers in over forty countries, four international offices, and academic managers worldwide, NCC Education has established a global presence. This global reach allows KMC to benefit from NCC Education's international expertise and resources.



## 1. Cyber Security and Ethical Hacking

### Course Structure:

The Cyber Security and Ethical Hacking courses offered by KMC are designed to provide comprehensive knowledge and practical skills in the field. The curriculum covers a wide range of topics to ensure students gain a deep understanding of the subject matter.



## 2. Artificial Intelligence

### Course Structure:

The AI course offered by KMC is carefully crafted to provide students with a comprehensive understanding of AI principles, methodologies, and applications. The course structure encompasses a range of topics, enabling students to develop a strong foundation in AI.



## 3. Data Science

### Course Structure:

The Data Science course offered by KMC, in collaboration with NCC Education, is designed to equip students with the essential skills and knowledge required for success in the field. The course structure encompasses a diverse range of topics, covering both theoretical foundations and practical applications.



# Research and Presentation

The Research and Presentation program is a non-credit course designed to improve students' investigative research and communication skills. Participants study various topics, learning how to collect, analyze, and present data effectively. The course concludes with a year-end competition, allowing students to display their research and presentation abilities. This program provides students with vital skills for their future careers, preparing them for success through thorough research activities and a competitive presentation setting.

## Course Structure

### Introduction to Research:

- Overview of research methodologies.
- Identifying research questions and hypotheses.

### Data Collection and Analysis:

- Techniques for gathering primary and secondary data.
- Statistical analysis and interpretation of data.

### Presentation Skills:

- Structuring a presentation logically.
- Designing visual aids and infographics.
- Practicing delivery and improving public speaking skills.

### Year-End Competition

The competition serves as a capstone event, challenging students to present their research findings to a panel of judges. It aims to:

- Provide a real-world experience of presenting research.
- Foster a spirit of healthy competition and peer learning.



## Program Objectives

### Develop Research Skills:

- Teach students how to conduct thorough and methodical research.
- Guide students in identifying credible sources and gathering relevant data.
- Emphasize the importance of ethical research practices.

### Enhance Analytical Abilities:

- Train students to critically analyze data and draw meaningful conclusions.
- Encourage the use of various analytical tools and methodologies.

### Improve Communication Skills:

- Focus on effective communication techniques, both written and oral.
- Assist students in organizing their findings into comprehensible and engaging presentations.
- Provide tips on public speaking and handling Q&A sessions confidently.

# Course-Based Subject Group PPT

## Competition:

The Course-Based Subject Group PPT Competition enhances students' research, teamwork, and presentation skills. In the first round, section-wise competitions are held within each subject to select the best group. These winners then compete in the final round across all subjects. The program promotes creativity, collaboration, and confident presentation. It concludes with awards for the top three groups and recognition for the Best Presenter.



# Industrial Visit & Field visit

Industrial and Field Visits provide students with practical exposure beyond the classroom. They help connect theoretical knowledge with real-world applications while enhancing observation, understanding, and career readiness.



# Corporate Reach Out Club



The Corporate Reach Out Club bridges the gap between management students and the corporate sector by connecting students with industry professionals. This enhances practical knowledge and career readiness, providing insights into real-world business challenges and industry expectations. These efforts contribute to the professional development of students, preparing them for successful careers.

## Events Organized

### Entrepreneurial Insights Session

An interactive session with the founder and entrepreneur of Syanko Katti Roll, sharing insights on business startups and entrepreneurial journeys.

### Money Matters: Finance and Investment Workshop

A comprehensive workshop on financial literacy and the workings of the share market to educate students on personal finance and investments.

### Hotel Visit

A field visit to a prominent hotel to learn about the hospitality industry, operations, and management.

### Chartered Accountant (CA) Workshop

A session with a Chartered Accountant to discuss the role and responsibilities of CAs and opportunities in accounting and finance.

### Startup Incubator

From Idea to Impact: A program designed to guide students on transforming innovative ideas into viable business ventures.

### Banking Behind the Desk

An Industry Visit: A visit to a leading bank to understand banking operations, financial services, and career opportunities in the banking sector.



# Event Management Club



The Event Management Club is a dynamic student-led body responsible for planning, organizing, and executing various college events and programs. It provides students with hands-on experience in event coordination, teamwork, and leadership.

The club works on managing events such as seminars, competitions, cultural programs, and special occasions, handling everything from planning and promotion to logistics and execution. Through active involvement, members develop creativity, communication skills, and the ability to work under pressure while ensuring successful and impactful events.





## Legal Club



The Legal Club is an academic platform that fosters students' interest in law, justice, and civic awareness. It provides opportunities to explore legal concepts beyond the classroom through interactive and practical activities.

The club organizes programs such as moot courts, debates, workshops, and awareness campaigns, helping students develop critical thinking, argumentation, and public speaking skills while promoting a deeper understanding of legal systems and rights.

## Moot Court

The Moot Court Program is a practical, skill-based initiative that introduces students to real courtroom procedures through simulated trials. Students engage in legal research, case analysis, and argument presentation, helping them develop critical thinking, public speaking, and confidence. This program bridges the gap between theory and practice, especially for those interested in pursuing a career in law.



## Client Counseling

Client Counseling is a practical learning activity that develops students' ability to interact with clients professionally and effectively. It focuses on understanding client concerns, analyzing legal issues, and providing appropriate advice with clarity and confidence.



# KMC Silver Jubilee Celebration

## 26 Years Of Academic Excellence

Kathmandu Model College (KMC) is proud to celebrate its Silver Jubilee, marking 26 remarkable years of commitment to academic excellence, innovation, and student empowerment in the education sector. Since its foundation, KMC has remained committed to nurturing bright minds and creating a learning atmosphere in which students succeed not only academically, but also socially and ethically.

Over the past two and a half decades, KMC has transformed into one of Nepal's most respected educational institutions, offering a wide range of academic programs that emphasize critical thinking, leadership, and global awareness.

With a team of experienced faculty, state-of-the-art facilities, and a forward-looking vision, KMC has empowered thousands of students to pursue their dreams and make meaningful contributions to society.

This Silver Jubilee is more than just a celebration of longevity; it is a tribute to the college's unwavering dedication to quality education,

innovation in teaching methodologies, and its role in shaping future-ready graduates. As KMC reflects on its past achievements, it also looks ahead with renewed enthusiasm to continue leading educational excellence for generations to come.



# Principal's List Award: Celebrating Academic Excellence

Our institution takes pride in recognizing academic excellence through the prestigious Principal's List Award. This honor is bestowed upon students who have consistently demonstrated outstanding performance in all the examinations, reflecting their dedication, discipline, and pursuit of excellence. We celebrate their achievements and remain committed to nurturing their potential as they strive for continued success in their board examinations and beyond.



# International Collaboration

*Kathmandu Model College (KMC) has been actively engaging in global partnerships to promote academic excellence and provide diverse learning opportunities to its students. Through strategic collaborations, KMC has established strong ties with renowned institutions worldwide.*

## Georgia Southwestern State University, USA

Kathmandu Model College (KMC) and Georgia Southwestern State University in the USA have signed a Memorandum of Understanding (MOU) to enhance cooperation and promote academic and educational exchanges between the two institutions. The Memorandum of Understanding (MOU) includes the exchange of students and faculty or staff, offering special academic programs, and extending study abroad opportunities. This program provides immense benefits for meritorious students with outstanding academic performance.



international quality standards and empowering teachers, we help learners maximize their benefits. Our programs and assessments focus on building and showcasing real-world, practical, and transferable skills for lifelong success.

## Mokpo National University, South Korea

KMC has established a partnership with Mokpo National University, South Korea, for the exchange of students and teachers between the two nations.

## Tongren Polytechnic College, China

KMC has signed an agreement with Tongren Polytechnic College, China, for the exchange of students and faculty, joint research, mutual assistance and services, and the exchange of information and developments between the two nations.

## University of Missouri, USA

KMC has signed an agreement with the University of Missouri, USA, which will encourage the exchange of faculty members for joint teaching and research programs.

## QTEC Learning Solutions, UK

In today's technologically advanced world, soft skills are essential for learners of all ages to realize their full potential. QTEC Learning Solutions, UK, goes beyond classroom textbooks, aligning with QCF benchmarks to deliver practical and relevant programs. We ensure learners receive strong support and resources for personal and professional growth. By maintaining



## Stony Brook University, New York, USA

KMC has recently signed an Memorandum of Understanding (MOU) with Stony Brook University, New York, USA to collaborate and promote research activities, enhance academic services, and develop academic excellence through faculty development.

# Class Representatives (CR) Leadership & Personality Development Workshop



## KMC Educational Network



**KATHMANDU MODEL  
SECONDARY SCHOOL**  
BAGBAZAR, KATHMANDU

Bagbazar, Kathmandu  
Tel: 5342121, 5342015  
ktmmodelcollege.edu.np

Courses Offered  
**+2 SCIENCE  
MANAGEMENT  
LAW**



**KATHMANDU MODEL  
SECONDARY SCHOOL**  
BALKUMARI, LALITPUR

Balkumari, Lalitpur  
Tel: 5201331, 5201334  
ktmmodelcollege.edu.np

Courses Offered  
**+2 SCIENCE  
MANAGEMENT  
LAW**



**KATHMANDU  
MODEL COLLEGE**  
(AFFILIATED TO TU)

Bagbazar, Kathmandu  
Tel: 5328321, 5342775  
kmcen.edu.np

Courses Offered  
**BBA | BBM (Entrepreneurship)  
BCA | BPSYCH | BSW | BBS  
MBS (Evening) | MA in English**



Lakhechaur Marg, New Baneshwor, Kathmandu  
Tel: 4574845, 4574851  
apolointcollege.edu.np

Courses Offered  
**BBA | BBA-F  
BHM | BCSIT  
MBA**



**HIMALAYA  
COLLEGE OF ENGINEERING**  
(Affiliated to Tribhuvan University)

Chyasal, Lalitpur  
Tel: 5440555, 5547266  
hcoe.edu.np

Courses Offered  
**BE Civil | B. Architecture  
BE Electronics, Comm. & Information  
BE Computer | BCA | B.Sc. CSIT**



Lakhechaur Marg, New Baneshwor, Kathmandu  
Tel: 4500128, 9744464591  
gyanshree.edu.np

Courses Offered  
**PLAYGROUP  
TO  
GRADE X**



Balkumari, Lalitpur  
Tel: 5201331, 5201334  
gyanshree.edu.np

Courses Offered  
**GRADE 1  
TO  
GRADE X**



Kamaladi, Kathmandu  
Tel: 5901393, 9851344685  
mitnepal.edu.np

Courses Offered  
**BBA  
BIT  
MBA**



Santinagar, Kathmandu  
Tel: 4620522, 4620523  
newsunmit.edu.np

Courses Offered  
**PLAYGROUP  
TO  
GRADE XII** | Courses Offered  
**BBM | BBS  
BSW | BCA  
BSc. CSIT**



Buddhanagar, Kathmandu  
Tel: 4797111, 4792016  
kmcnschool.edu.np

Courses Offered  
**PLAY GROUP  
TO  
GRADE X**



Padsari, Rupandehi  
Tel: 429192, 429193  
butmc.edu.np

Courses Offered  
**BBA  
BHM  
MPGD**



# KATHMANDU MODEL SECONDARY SCHOOL

Bagbazar, Kathmandu



Bagbazar, Kathmandu  
Tel: 01-5342121, 5342015  
[www.ktmmodelcollege.edu.np](http://www.ktmmodelcollege.edu.np)

    / kmcbagbazar

**+2** **SCIENCE  
MANAGEMENT  
LAW**